



## Data tables: September 2012

---

Published October 2012

### Introduction

The functions of the Chinese Medicine Board of Australia include:

- registering registering Chinese medicine practitioners and students
- developing standards, codes and guidelines for the Chinese Medicine profession
- handling notifications, complaints, investigations and disciplinary hearings
- assessing overseas trained practitioners who wish to practise in Australia
- approving accreditation standards and accredited courses of study.

The Board's functions are supported by Australian Health Practitioner Regulation Agency (AHPRA). For information about legislation governing our operations see AHPRA's Legislation & Publications at <http://www.ahpra.gov.au/Legislation-and-Publications.aspx>

The Board has analysed its first quarter of registration data and produced a number of statistical breakdowns about registrants to share with the profession and community.

The Board shares these breakdowns regularly. In the context of "grandparenting", as registration applications are finalised a clearer picture of the profession will emerge.

For more information on Chinese Medicine registration, please see the Board's website [www.chinesemedicineboard.gov.au/Registration.aspx](http://www.chinesemedicineboard.gov.au/Registration.aspx)

### Index of Tables

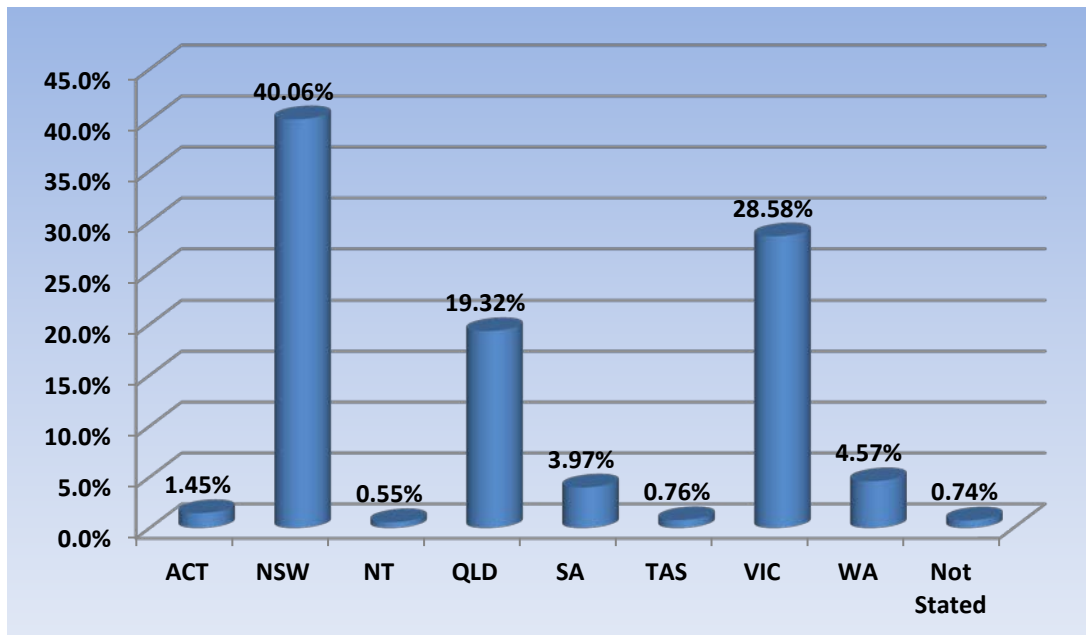
<b>Chinese Medicine Practitioners: State/Territory by Registration Type .....</b>	<b>2</b>
<b>Chinese Medicine Practitioners: Age by Registration Type .....</b>	<b>3</b>
<b>Chinese Medicine Practitioners: Gender by State and Territory by Registration Type .....</b>	<b>4</b>
<b>Chinese Medicine Practitioners: Registration Numbers by Division by State and Territory .....</b>	<b>Error!</b>

Bookmark not defined.

## Chinese Medicine Practitioners: State and Territory by Registration Type

State	General	Limited Public interest	Non-practising	Total	% By State
ACT	52	3		55	1.45%
NSW	1,421	101	2	1,524	40.06%
NT	13		8	21	0.55%
QLD	702	31	2	735	19.32%
SA	147	3	1	151	3.97%
TAS	27	2		29	0.76%
VIC	1,016	4	67	1,087	28.58%
WA	151	23		174	4.57%
Not Stated	15		13	28	0.74%
<b>Total</b>	<b>3,544</b>	<b>167</b>	<b>93</b>	<b>3,804</b>	

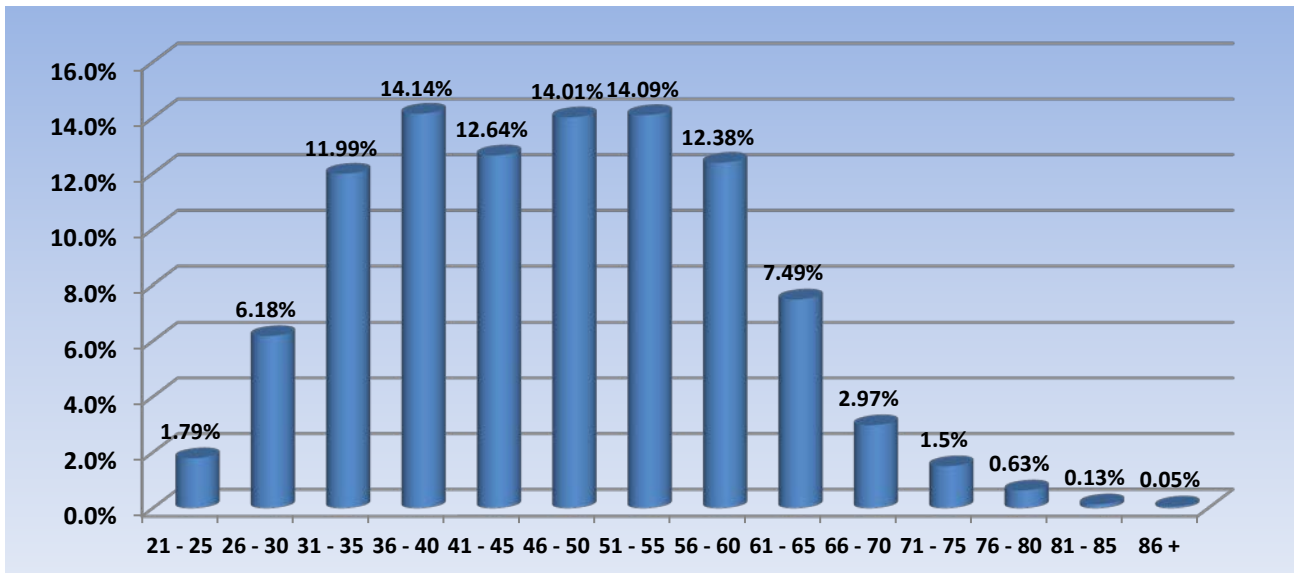
**% By State and Territory**



## Chinese Medicine Practitioners: Age by Registration Type

Age Group	General	Limited Public interest	Non-practising	Total	% By Age Group
21 - 25	64	1	3	68	1.79%
26 - 30	224	6	5	235	6.18%
31 - 35	430	8	18	456	11.99%
36 - 40	506	16	16	538	14.14%
41 - 45	451	22	8	481	12.64%
46 - 50	501	21	11	533	14.01%
51 - 55	500	22	14	536	14.09%
56 - 60	433	30	8	471	12.38%
61 - 65	263	18	4	285	7.49%
66 - 70	99	11	3	113	2.97%
71 - 75	49	6	2	57	1.5%
76 - 80	19	4	1	24	0.63%
81 - 85	4	1		5	0.13%
86 +	1	1		2	0.05%
<b>Total</b>	<b>3,544</b>	<b>167</b>	<b>93</b>	<b>3,804</b>	

### % By Age



## Chinese Medicine Practitioners: Gender by State and Territory by Registration Type

Gender	State	General	Limited	Non-practising	Total Count	% By Gender By State
			Public interest			
Female	ACT	25	1		26	0.68%
	NSW	744	39	2	785	20.64%
	NT	9		5	14	0.37%
	QLD	367	14	1	382	10.04%
	SA	80	2	1	83	2.18%
	TAS	14	2		16	0.42%
	VIC	548	2	44	594	15.62%
	WA	88	18		106	2.79%
	Not Stated	8		5	13	0.34%
	<b>Sub total</b>	<b>1,883</b>	<b>78</b>	<b>58</b>	<b>2,019</b>	<b>53.08%</b>
Male	ACT	27	2		29	0.76%
	NSW	677	62		739	19.43%
	NT	4		3	7	0.18%
	QLD	335	17	1	353	9.28%
	SA	67	1		68	1.79%
	TAS	13			13	0.34%
	VIC	467	2	23	492	12.93%
	WA	63	5		68	1.79%
	Not Stated	7		8	15	0.39%
	<b>Sub total</b>	<b>1,659</b>	<b>89</b>	<b>35</b>	<b>1,783</b>	<b>46.9%</b>
Not Stated	VIC	1			1	0.03%
	<b>Sub total</b>	<b>1</b>			<b>1</b>	<b>0.03%</b>
<b>Total</b>		<b>3,544</b>	<b>167</b>	<b>93</b>	<b>3,804</b>	

## Chinese Medicine Practitioners: Registration Numbers by Division, by State and Territory

Division	ACT	NSW	NT	QLD	SA	TAS	VIC	WA	No PPP	Grand Total
Acupuncturist	16	373	6	479	75	17	407	62	3	1,438
Acupuncturist and Chinese Herbal Dispenser		1		3						4
Acupuncturist and Chinese Herbal Dispenser and Chinese Herbal Medicine Practitioner	8	317		38	5		9	18		395
Acupuncturist and Chinese Herbal Medicine Practitioner	31	783	8	208	69	11	641	92	27	1,870
Chinese Herbal Dispenser		20		1	1		2	2		26
Chinese Herbal Dispenser and Chinese Herbal Medicine Practitioner		12		1	1					14
Chinese Herbal Medicine Practitioner		19		4	2	1	28	2	1	57
<b>Grand Total</b>	<b>55</b>	<b>1,525</b>	<b>14</b>	<b>734</b>	<b>153</b>	<b>29</b>	<b>1,087</b>	<b>176</b>	<b>31</b>	<b>3,804</b>