



Chinese Medicine  
Board of Australia

AHPRA

## Chinese Medicine Registrant Data: March 2013

---

Published April 2013

### Introduction

The functions of the Chinese Medicine Board of Australia include:

- registering Chinese medicine practitioners and students
- developing standards, codes and guidelines for the Chinese Medicine profession
- handling notifications, complaints, investigations and disciplinary hearings
- assessing overseas trained practitioners who wish to practise in Australia
- approving accreditation standards and accredited courses of study.

The Board's functions are supported by Australian Health Practitioner Regulation Agency (AHPRA). For information about legislation governing our operations see AHPRA's Legislation & Publications at <http://www.ahpra.gov.au/Legislation-and-Publications.aspx>

The Board has analysed its third quarter of registration data and produced a number of statistical breakdowns about registrants to share with the profession and community.

The Board shares these breakdowns regularly. In the context of "grandparenting", as registration applications are finalised a clearer picture of the profession will emerge.

For more information on Chinese Medicine registration, please see the Board's website [www.chinesemedicineboard.gov.au/Registration.aspx](http://www.chinesemedicineboard.gov.au/Registration.aspx)

### Index of Tables

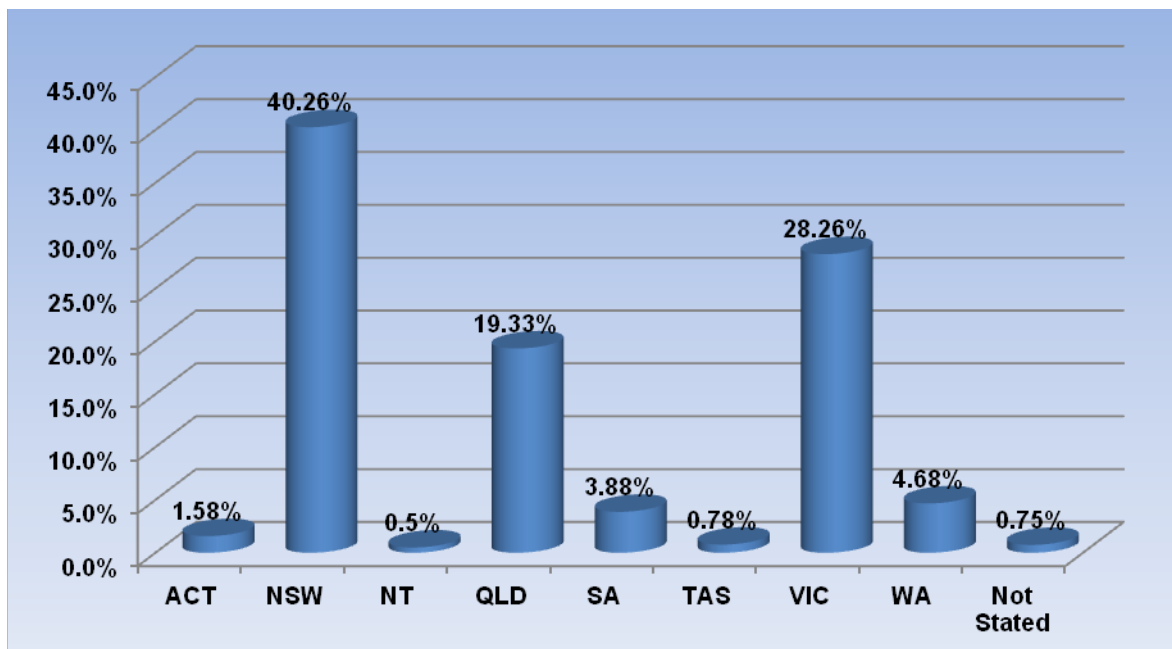
<b>Chinese Medicine Practitioners: State and territory by registration type .....</b>	<b>2</b>
<b>Chinese Medicine Practitioners: Age by registration type.....</b>	<b>3</b>
<b>Chinese Medicine Practitioners: Gender by state and territory by registration type.....</b>	<b>4</b>
<b>Chinese Medicine Practitioners: Registration numbers by division by state and territory .....</b>	<b>Error!</b>

Bookmark not defined.

## Chinese medicine practitioners: State and territory by registration type

State	General	Limited Teaching or research	Non- practising	Total	% By State
ACT	62		1	63	1.58%
NSW	1,605		5	1,610	40.26%
NT	12		8	20	0.5%
QLD	765	1	7	773	19.33%
SA	155			155	3.88%
TAS	31			31	0.78%
VIC	1,068		62	1,130	28.26%
WA	186		1	187	4.68%
Not Stated	17		13	30	0.75%
<b>Total</b>	<b>3,901</b>	<b>1</b>	<b>97</b>	<b>3,999</b>	

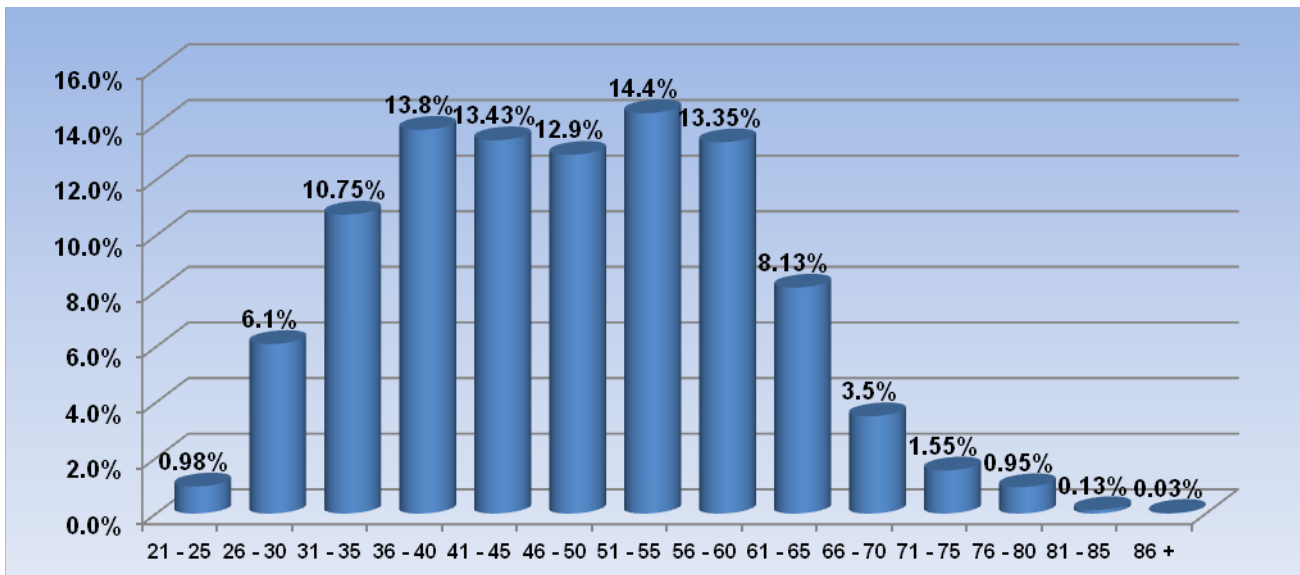
**% By state and territory**



## Chinese medicine practitioners: age by registration type

Age Group	General	Limited Teaching or research	Non- practising	Total	% By Age Group
21 - 25	38		1	39	0.98%
26 - 30	238		6	244	6.1%
31 - 35	419		11	430	10.75%
36 - 40	531		21	552	13.8%
41 - 45	521		16	537	13.43%
46 - 50	510		6	516	12.9%
51 - 55	559		17	576	14.4%
56 - 60	524	1	9	534	13.35%
61 - 65	320		5	325	8.13%
66 - 70	138		2	140	3.5%
71 - 75	60		2	62	1.55%
76 - 80	37		1	38	0.95%
81 - 85	5			5	0.13%
86 +	1			1	0.03%
<b>Total</b>	<b>3,901</b>	<b>1</b>	<b>97</b>	<b>3,999</b>	

## % By age



## Chinese medicine practitioners: Gender by state and territory by registration type

Sex	State	General	Limited	Non-practising	Total Count	% By Sex By State
			Teaching or research			
Female	ACT	32		1	33	0.83%
	NSW	824		2	826	20.66%
	NT	9		5	14	0.35%
	QLD	399		4	403	10.08%
	SA	82			82	2.05%
	TAS	18			18	0.45%
	VIC	575		42	617	15.43%
	WA	111		1	112	2.8%
	Not Stated	10		5	15	0.38%
	Sub total	2,060		60	2,120	53.01%
Male	ACT	30			30	0.75%
	NSW	780		3	783	19.6%
	NT	3		3	6	0.15%
	QLD	366	1	3	370	9.25%
	SA	73			73	1.83%
	TAS	13			13	0.33%
	VIC	492		20	512	12.8%
	WA	75			75	1.88%
	Not Stated	7		8	15	0.38%
	Sub total	1,839	1	37	1,877	46.96%
Male	NSW	1			1	19.6%
	Sub total	1			1	46.96%
Not Stated	VIC	1			1	0.03%
	Sub total	1			1	0.03%
<b>Total</b>		<b>3,901</b>	<b>1</b>	<b>97</b>	<b>3,999</b>	

## Chinese medicine practitioners: Registration numbers by division, by state and territory

	ACT	NSW	NT	QLD	SA	TAS	VIC	WA	No PPP	Total
Acupuncturist	22	402	6	523	84	18	414	65	4	1,538
Acupuncturist and Chinese Herbal Dispenser		1		4						5
Acupuncturist and Chinese Herbal Dispenser and Chinese Herbal Medicine Practitioner	6	326		36	7		30	15		420
Acupuncturist and Chinese Herbal Medicine Practitioner	34	815	7	204	61	13	660	101	25	1,920
Chinese Herbal Dispenser		32			1		3	2		38
Chinese Herbal Dispenser and Chinese Herbal Medicine Practitioner		11			2					13
Chinese Herbal Medicine Practitioner	1	25		6	2	1	26	4		65
<b>Chinese Medicine Practitioner</b>	<b>63</b>	<b>1,612</b>	<b>13</b>	<b>773</b>	<b>157</b>	<b>32</b>	<b>1,133</b>	<b>187</b>	<b>29</b>	<b>3,999</b>