

Chinese Medicine Registrant Data: March 2014

Published April 2014

Introduction

The functions of the Chinese Medicine Board of Australia include:

- registering registering Chinese medicine practitioners and students
- developing standards, codes and guidelines for the Chinese Medicine profession
- handling notifications, complaints, investigations and disciplinary hearings
- assessing overseas trained practitioners who wish to practise in Australia
- approving accreditation standards and accredited courses of study.

The Board's functions are supported by [Australian Health Practitioner Regulation Agency](#) (AHPRA). For information about legislation governing our operations see [AHPRA's Legislation & Publications](#) at <http://www.ahpra.gov.au/Legislation-and-Publications.aspx>

The Board has analysed its fourth quarter of registration data and produced a number of statistical breakdowns about registrants to share with the profession and community.

The Board shares these breakdowns regularly. In the context of “grandparenting”, as registration applications are finalised a clearer picture of the profession will emerge.

For more information on Chinese Medicine registration, please see the Board's website www.chinesemedicineboard.gov.au/Registration.aspx

Index of Tables

Chinese Medicine health practitioners – registration type and sub type by state or territory	2
Chinese Medicine health practitioners – percentage by principal place of practice	2
Chinese Medicine health practitioners – registration division(s)	2
Chinese Medicine health practitioners – registration type by age group	3
Chinese Medicine health practitioners – registration type by gender	3
Chinese Medicine health practitioners – percentage by gender	4

Chinese Medicine health practitioners – registration type and sub type by state or territory

Chinese Medicine Practitioner	ACT	NSW	NT	QLD	SA	TAS	VIC	WA	No PPP	Total
General	62	1,690	14	782	162	35	1,124	213	15	4,097
Limited (Total of Sub Types)	-	-	-	-	-	-	-	-	-	-
Teaching or Research	-	-	-	-	-	-	-	-	-	-
Non-Practising	2	17		20	1	-	56	2	24	122
Total Practitioners	64	1,707	14	802	163	35	1,180	215	39	4,219

Table 1: Chinese Medicine health practitioners – registration type and sub type by state or territory

Chinese Medicine health practitioners – percentage by principal place of practice

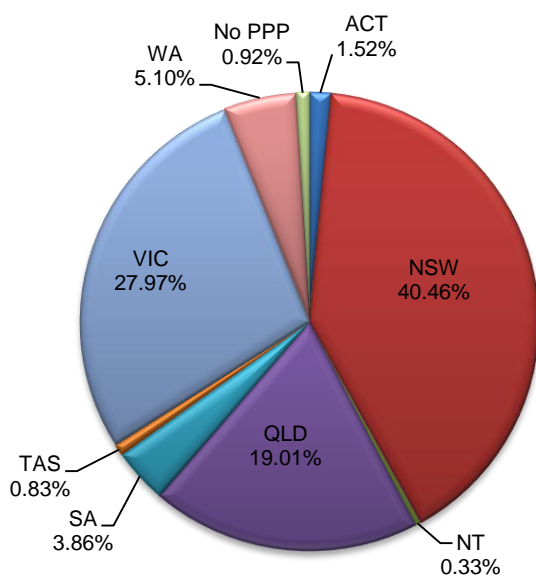


Chart 1: Chinese Medicine health practitioners – percentage by principal place of practice

Chinese Medicine health practitioners – registration division(s)

Chinese Medicine Practitioner	ACT	NSW	NT	QLD	SA	TAS	VIC	WA	No PPP	Total
Acupuncturist	23	413	10	545	91	21	423	85	4	1,615
Acupuncturist and Chinese Herbal Dispensing	-	1	-	3	-	-	1	-	-	5
Acupuncturist and Chinese Herbal Dispensing and Chinese Herbal Medicine	7	349	-	39	7	1	59	20	1	483
Acupuncturist and Chinese Herbal Medicine	34	877	4	207	60	12	670	106	32	2,002
Chinese Herbal Dispensing	-	34	-	1	1	-	3	2	-	41
Chinese Herbal Dispensing and Chinese Herbal Medicine	-	11	-	-	3	-	-	-	-	14
Chinese Herbal Medicine	-	22	-	7	1	1	24	2	2	59
Total	64	1,707	14	802	163	35	1,180	215	39	4,219

Table 2: Chinese Medicine health practitioners – registration division(s)

Chinese Medicine health practitioners – registration type by age group

Chinese Medicine Practitioner Age Group	Type			Total	% by Age Group
	General	Limited	Non-Practising		
U-25	22	-	-	22	0.52%
25-29	216	-	5	221	5.24%
30-34	366	-	15	381	9.03%
35-39	561	-	22	583	13.82%
40-44	566	-	19	585	13.87%
45-49	491	-	10	501	11.87%
50-54	597	-	11	608	14.41%
55-59	551	-	18	569	13.49%
60-64	395	-	12	407	9.65%
65-69	190	-	3	193	4.57%
70-74	88	-	3	91	2.16%
75-79	39	-	3	42	1.00%
80+	15	-	1	16	0.38%
Total	4,097	-	122	4,219	100.00%

Table 3: Chinese Medicine health practitioners – registration type by age group

Chinese Medicine health practitioners – by age group

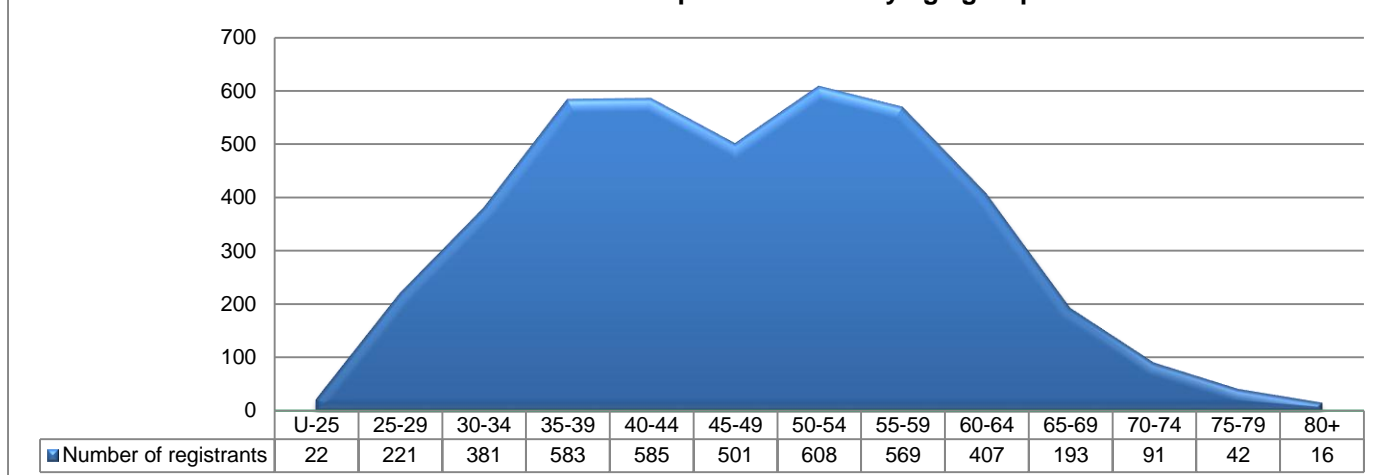


Chart 2: Chinese Medicine health practitioners – by age group

Chinese Medicine health practitioners – registration type by gender

Chinese Medicine Practitioner	ACT	NSW	NT	QLD	SA	TAS	VIC	WA	No PPP	Total
Female	33	886	10	426	84	22	646	124	20	2,251
General	31	876	10	415	83	22	612	123	7	2,179
Limited	-	-	-	-	-	-	-	-	-	-
Non-Practising	2	10	-	11	1	-	34	1	13	72
Male	31	821	4	376	79	13	534	91	19	1,968
General	31	814	4	367	79	13	512	90	8	1,918
Limited	-	-	-	-	-	-	-	-	-	-
Non-Practising	-	7	-	9	-	-	22	1	11	50
Total Practitioners	64	1,707	14	802	163	35	1,180	215	39	4,219

Table 4: Chinese Medicine health practitioners – registration type by gender

Chinese Medicine health practitioners – percentage by gender										
Chinese Medicine Practitioner	ACT	NSW	NT	QLD	SA	TAS	VIC	WA	No PPP	Total
Female	51.56%	51.90%	71.43%	53.12%	51.53%	62.86%	54.75%	57.67%	51.28%	53.35%
Male	48.44%	48.10%	28.57%	46.88%	48.47%	37.14%	45.25%	42.33%	48.72%	46.65%

Table 5: Chinese Medicine health practitioners – percentage by gender