

# Chinese Medicine Board of Australia Registrant Data

---

Reporting period: December 2015



Chinese Medicine  
Board of Australia

AHPRA

## Table of contents

Introduction .....	3
Principal Place of Practice .....	4
<b>Registration Type</b> .....	<b>4</b>
<b>Registration Divisions</b> .....	<b>5</b>
Age Group.....	6
<b>Registration Type</b> .....	<b>6</b>
Gender .....	7
<b>Registration Type</b> .....	<b>7</b>
<b>Percentage</b> .....	<b>7</b>

## Introduction

The functions of the Chinese Medicine Board of Australia (the Board) include:

- registering Chinese medicine practitioners and students
- developing standards, codes and guidelines for the Chinese Medicine profession
- handling notifications, complaints, investigations and disciplinary hearings
- overseeing the assessment of overseas trained practitioners who wish to practise in Australia, and
- approving accreditation standards and accredited courses of study.

The Board's functions are supported by the [Australian Health Practitioner Regulation Agency \(AHPRA\)](#). For information about legislation governing our operations see AHPRA's Legislation & Publications at [www.ahpra.gov.au/Publications](http://www.ahpra.gov.au/Publications)

The Board has analysed its registration data and produced a number of statistical breakdowns about registrants to share with the profession and community. The Board shares these breakdowns regularly.

For more information on Chinese Medicine registration, please see the Board's website [www.chinesemedicineboard.gov.au/Registration.aspx](http://www.chinesemedicineboard.gov.au/Registration.aspx)

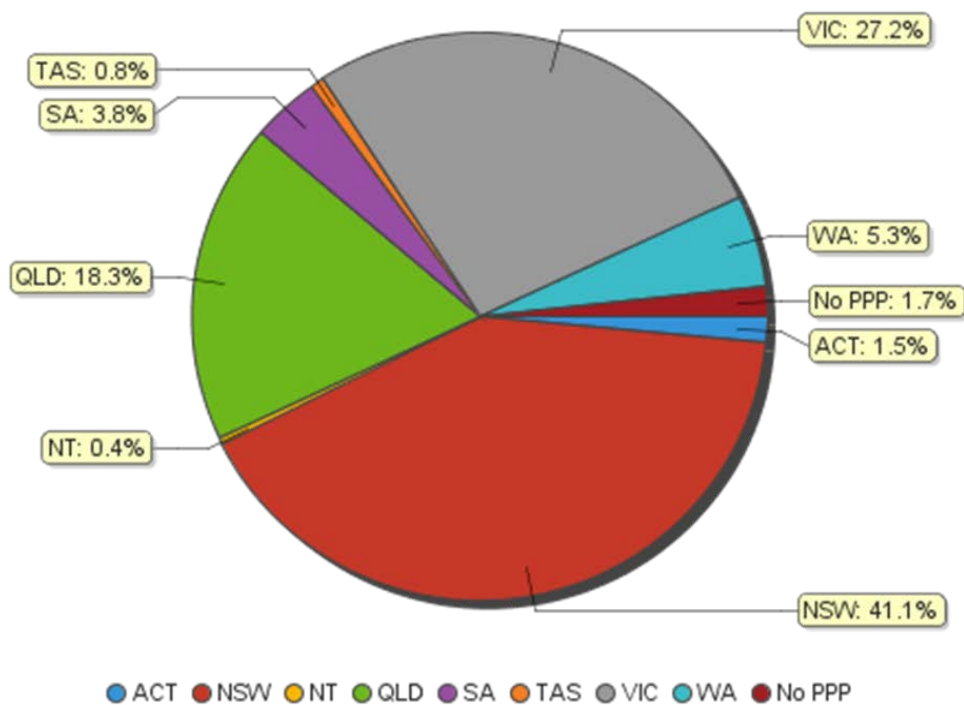
# Principal Place of Practice

## Registration Type

**Table 1.1 Registration Type by Principal Place of Practice**

Registration Type	ACT	NSW	NT	QLD	SA	TAS	VIC	WA	No PPP	Total
General	70	1,894	17	815	177	36	1,205	246	37	4,497
Non-practising		43		47	4	1	75	4	42	216
<b>Total</b>	<b>70</b>	<b>1,937</b>	<b>17</b>	<b>862</b>	<b>181</b>	<b>37</b>	<b>1,280</b>	<b>250</b>	<b>79</b>	<b>4,713</b>

**Table 1.2 Registration Type by Principal Place of Practice Percentages**



## Registration Divisions

**Table 2.1 Registrations by Division**

Divisions	ACT	NSW	NT	QLD	SA	TAS	VIC	WA	No PPP	Total
Acupuncturist	26	449	12	578	103	24	441	98	13	<b>1,744</b>
Acupuncturist and Chinese Herbal Dispenser				2						<b>2</b>
Acupuncturist and Chinese Herbal Dispenser and Chinese Herbal Medicine Practitioner	8	490		50	10	2	138	29	11	<b>738</b>
Acupuncturist and Chinese Herbal Medicine Practitioner	36	936	5	224	65	11	671	121	50	<b>2,119</b>
Chinese Herbal Dispenser		35		1	1		4	2	1	<b>44</b>
Chinese Herbal Dispenser and Chinese Herbal Medicine Practitioner		11			2		2		1	<b>16</b>
Chinese Herbal Medicine Practitioner		16		7			24		3	<b>50</b>
<b>Total</b>	<b>70</b>	<b>1,937</b>	<b>17</b>	<b>862</b>	<b>181</b>	<b>37</b>	<b>1,280</b>	<b>250</b>	<b>79</b>	<b>4,713</b>

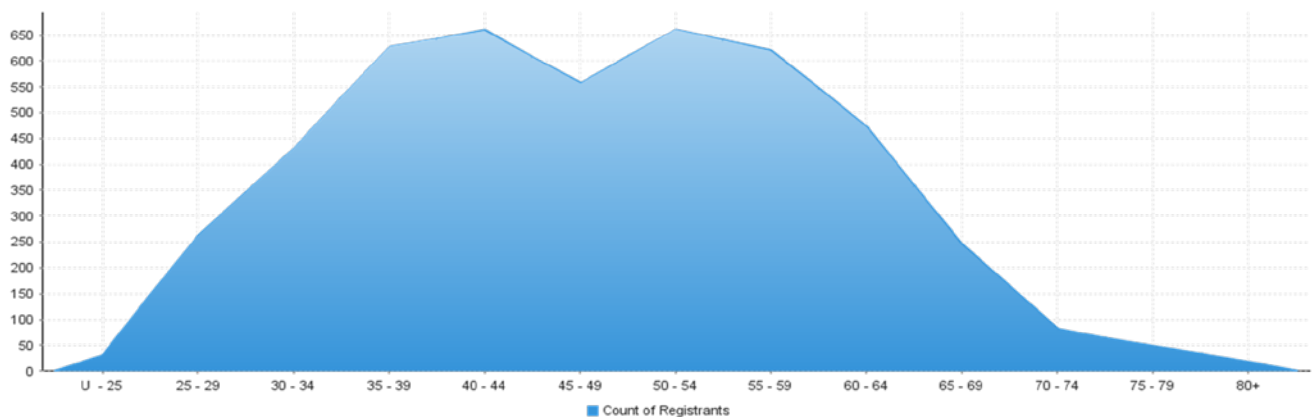
# Age Group

## Registration Type

**Table 3.1 Registration type by Age Group**

Age Group	General	Non-practising	Total
U - 25	29	2	31
25 - 29	250	13	263
30 - 34	397	34	431
35 - 39	599	29	628
40 - 44	627	32	659
45 - 49	540	17	557
50 - 54	640	21	661
55 - 59	592	28	620
60 - 64	453	19	472
65 - 69	231	14	245
70 - 74	78	3	81
75 - 79	45	3	48
80+	16	1	17
<b>Total</b>	<b>4,497</b>	<b>216</b>	<b>4,713</b>

**Table 3.2 Registrants by Age Group**



## Gender

### Registration Type

**Table 4.1 Registration type by gender**

Gender	Registration Type	ACT	NSW	NT	QLD	SA	TAS	VIC	WA	No PPP	Total
Female	General	37	999	10	424	95	23	661	149	17	<b>2,415</b>
	Non-practising		31		35	2	1	51	3	16	<b>139</b>
<b>Total Female</b>		<b>37</b>	<b>1,030</b>	<b>10</b>	<b>459</b>	<b>97</b>	<b>24</b>	<b>712</b>	<b>152</b>	<b>33</b>	<b>2,554</b>
Male	General	33	895	7	391	82	13	544	97	20	<b>2,082</b>
	Non-practising		12		12	2		24	1	26	<b>77</b>
<b>Total Male</b>		<b>33</b>	<b>907</b>	<b>7</b>	<b>403</b>	<b>84</b>	<b>13</b>	<b>568</b>	<b>98</b>	<b>46</b>	<b>2,159</b>
<b>Total</b>		<b>70</b>	<b>1,937</b>	<b>17</b>	<b>862</b>	<b>181</b>	<b>37</b>	<b>1,280</b>	<b>250</b>	<b>79</b>	<b>4,713</b>

### Percentage

**Table 5.1 Registration by Gender Percentages**

Gender	ACT	NSW	NT	QLD	SA	TAS	VIC	WA	No PPP	Total
Female	52.86%	53.18%	58.82%	53.25%	53.59%	64.86%	55.63%	60.80%	41.77%	<b>54.19%</b>
Male	47.14%	46.82%	41.18%	46.75%	46.41%	35.14%	44.38%	39.20%	58.23%	<b>45.81%</b>