

# Chinese Medicine Board of Australia Registrant Data

---

Reporting period: March 2016



Chinese Medicine  
Board of Australia

AHPRA

## Table of contents

Introduction .....	3
Principal Place of Practice .....	4
<b>Registration Type</b> .....	<b>4</b>
<b>Registration Divisions</b> .....	<b>5</b>
Age Group.....	6
<b>Registration Type</b> .....	<b>6</b>
Gender .....	7
<b>Registration Type</b> .....	<b>7</b>
<b>Percentage</b> .....	<b>7</b>

## Introduction

The functions of the Chinese Medicine Board of Australia (the Board) include:

- registering Chinese medicine practitioners and students
- developing standards, codes and guidelines for the Chinese Medicine profession
- handling notifications, complaints, investigations and disciplinary hearings
- overseeing the assessment of overseas trained practitioners who wish to practise in Australia, and
- approving accreditation standards and accredited courses of study.

The Board's functions are supported by the [Australian Health Practitioner Regulation Agency \(AHPRA\)](#). For information about legislation governing our operations see AHPRA's Legislation & Publications at [www.ahpra.gov.au/Publications](http://www.ahpra.gov.au/Publications)

The Board has analysed its registration data and produced a number of statistical breakdowns about registrants to share with the profession and community. The Board shares these breakdowns regularly.

For more information on Chinese Medicine registration, please see the Board's website [www.chinesemedicineboard.gov.au/Registration.aspx](http://www.chinesemedicineboard.gov.au/Registration.aspx)

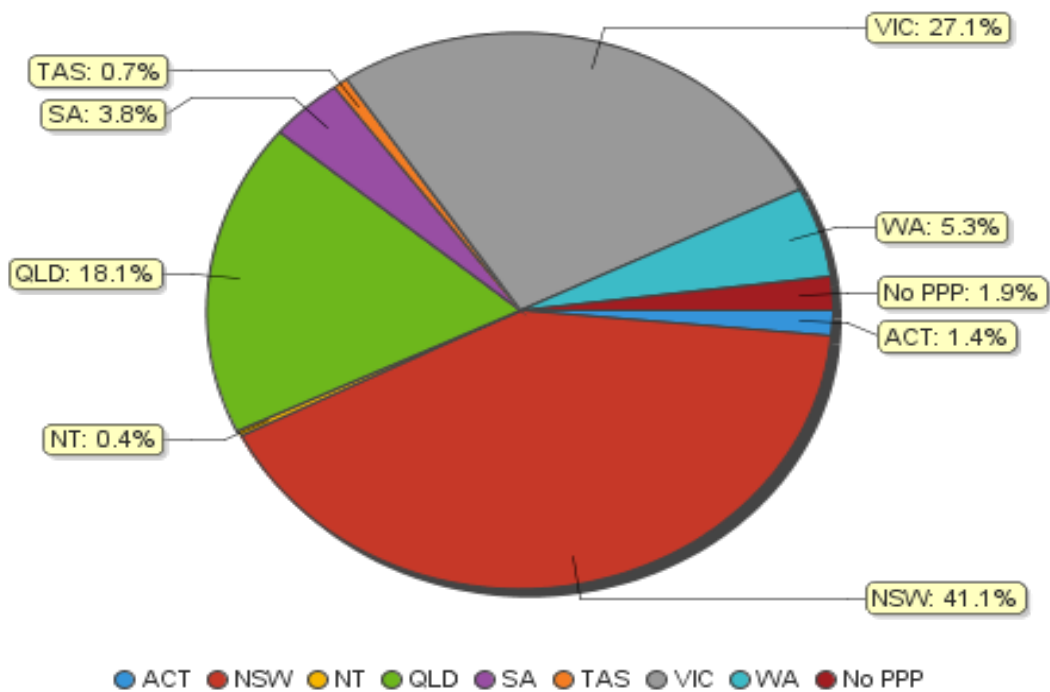
# Principal Place of Practice

## Registration Type

Table 1.1 Registration Type by Principal Place of Practice

Registration Type	ACT	NSW	NT	QLD	SA	TAS	VIC	WA	No PPP	Total
General	65	1,887	17	811	176	34	1,214	243	46	4,493
Non-practising	2	49		42	5		63	7	45	213
<b>Total</b>	<b>67</b>	<b>1,936</b>	<b>17</b>	<b>853</b>	<b>181</b>	<b>34</b>	<b>1,277</b>	<b>250</b>	<b>91</b>	<b>4,706</b>

Table 1.2 Registration Type by Principal Place of Practice Percentages



## Registration Divisions

**Table 2.1 Registrations by Division**

Divisions	ACT	NSW	NT	QLD	SA	TAS	VIC	WA	No PPP	Total
Acupuncturist	25	437	12	565	105	23	430	93	15	<b>1,705</b>
Acupuncturist and Chinese Herbal Dispenser				2						<b>2</b>
Acupuncturist and Chinese Herbal Dispenser and Chinese Herbal Medicine Practitioner	7	492		50	10	2	153	32	19	<b>765</b>
Acupuncturist and Chinese Herbal Medicine Practitioner	35	944	5	227	63	9	666	123	53	<b>2,125</b>
Chinese Herbal Dispenser		35		1	1		4	2	1	<b>44</b>
Chinese Herbal Dispenser and Chinese Herbal Medicine Practitioner		12			2		2		1	<b>17</b>
Chinese Herbal Medicine Practitioner		16		8			22		2	<b>48</b>
<b>Total</b>	<b>67</b>	<b>1,936</b>	<b>17</b>	<b>853</b>	<b>181</b>	<b>34</b>	<b>1,277</b>	<b>250</b>	<b>91</b>	<b>4,706</b>

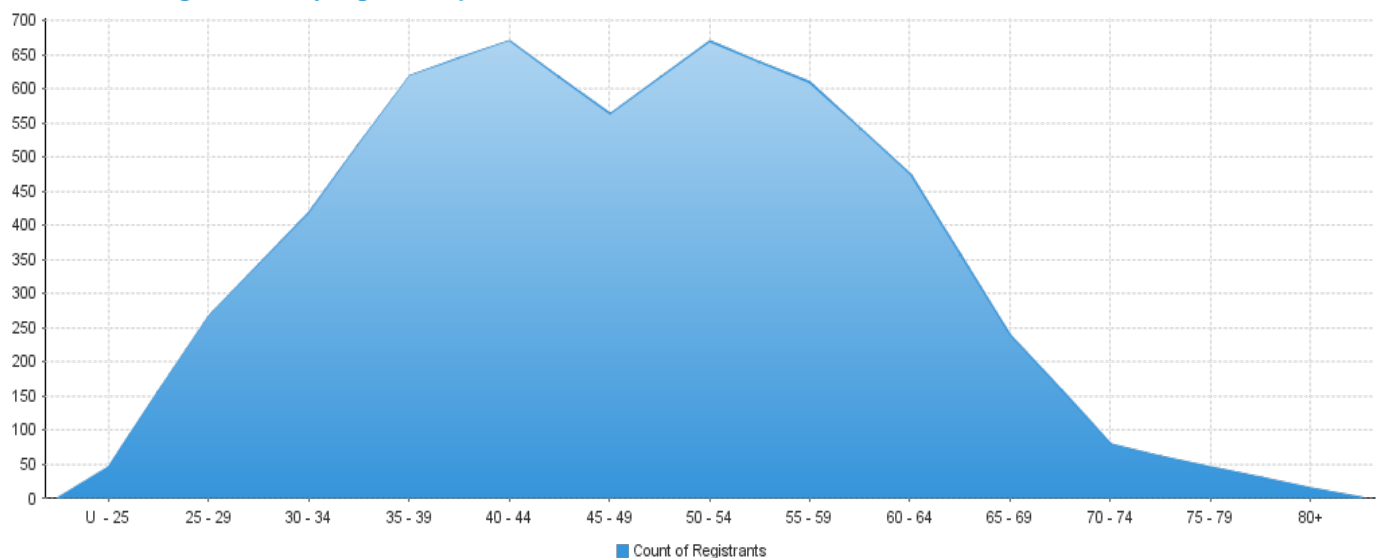
# Age Group

## Registration Type

**Table 3.1 Registration type by Age Group**

Age Group	General	Non-practising	Total
U - 25	42	2	44
25 - 29	250	18	268
30 - 34	386	31	417
35 - 39	591	28	619
40 - 44	642	28	670
45 - 49	544	18	562
50 - 54	644	24	668
55 - 59	582	26	608
60 - 64	456	18	474
65 - 69	227	12	239
70 - 74	75	4	79
75 - 79	40	4	44
80+	14		14
<b>Total</b>	<b>4,493</b>	<b>213</b>	<b>4,706</b>

**Table 3.2 Registrants by Age Group**



## Gender

### Registration Type

**Table 4.1 Registration type by gender**

Gender	Registration Type	ACT	NSW	NT	QLD	SA	TAS	VIC	WA	No PPP	Total
Female	General	35	1,009	10	422	97	21	676	149	23	<b>2,442</b>
	Non-practising	2	33		32	2		39	5	20	<b>133</b>
<b>Total Female</b>		<b>37</b>	<b>1,042</b>	<b>10</b>	<b>454</b>	<b>99</b>	<b>21</b>	<b>715</b>	<b>154</b>	<b>43</b>	<b>2,575</b>
Male	General	30	878	7	389	79	13	538	94	23	<b>2,051</b>
	Non-practising		16		10	3		24	2	25	<b>80</b>
<b>Total Male</b>		<b>30</b>	<b>894</b>	<b>7</b>	<b>399</b>	<b>82</b>	<b>13</b>	<b>562</b>	<b>96</b>	<b>48</b>	<b>2,131</b>
<b>Total</b>		<b>67</b>	<b>1,936</b>	<b>17</b>	<b>853</b>	<b>181</b>	<b>34</b>	<b>1,277</b>	<b>250</b>	<b>91</b>	<b>4,706</b>

### Percentage

**Table 5.1 Registration by Gender Percentages**

Gender	ACT	NSW	NT	QLD	SA	TAS	VIC	WA	No PPP	Total
Female	55.22%	53.82%	58.82%	53.22%	54.70%	61.76%	55.99%	61.60%	47.25%	<b>54.72%</b>
Male	44.78%	46.18%	41.18%	46.78%	45.30%	38.24%	44.01%	38.40%	52.75%	<b>45.28%</b>